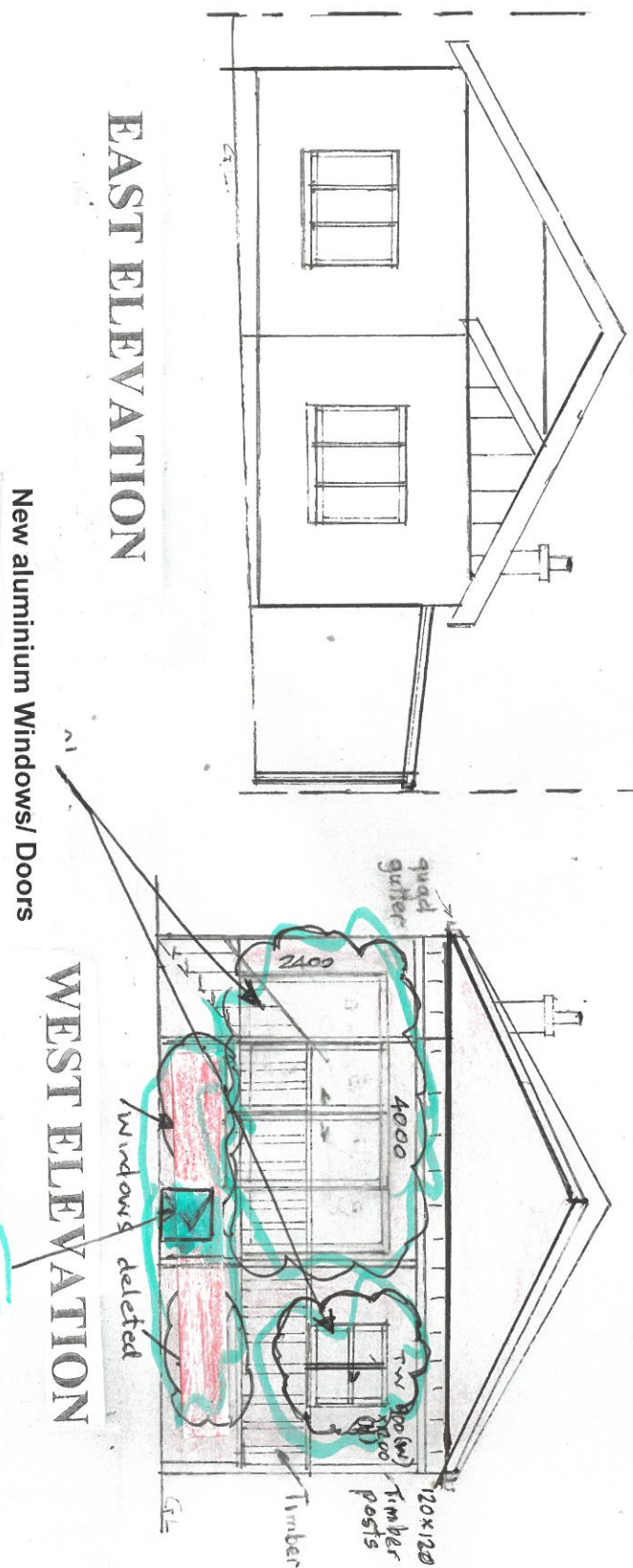
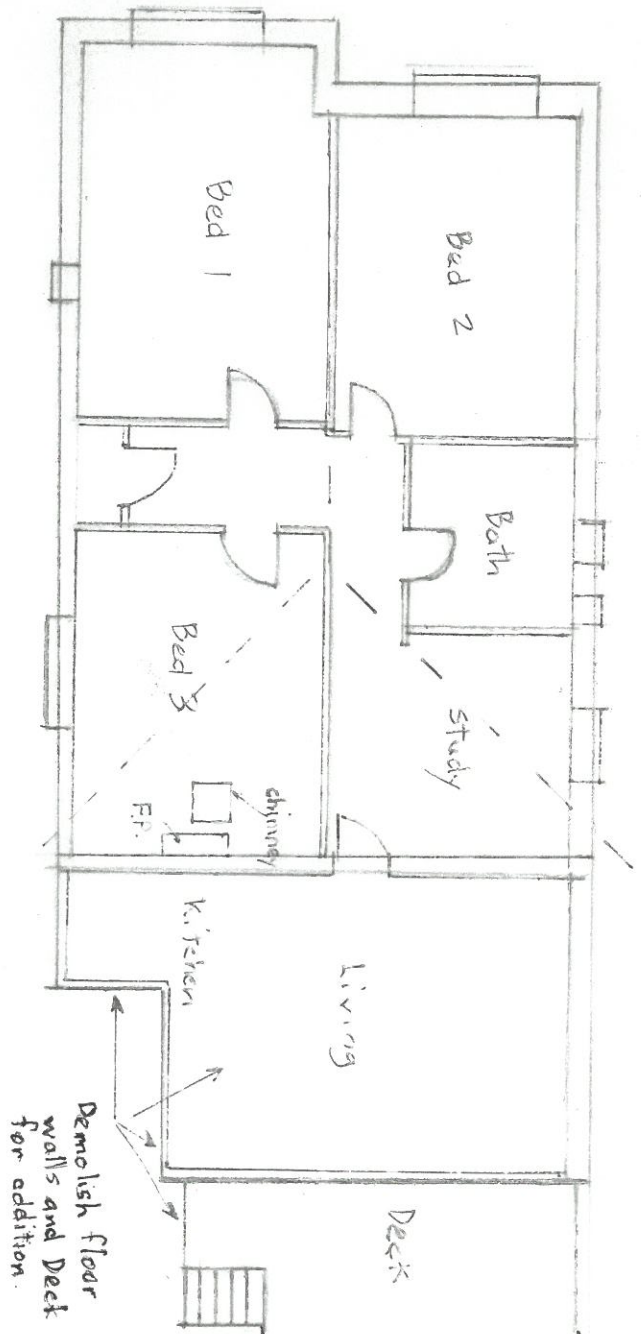


Bowral Brown bricks

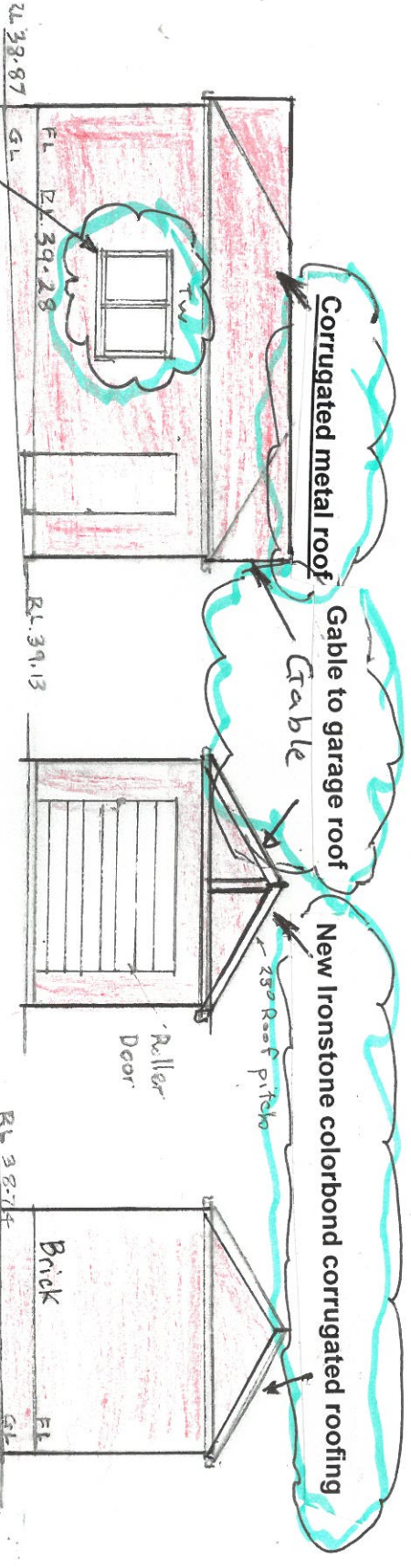


Existing Floor Plan



MODIFICATIONS.

- Basement level including internal stairs deleted
- Proposed FSR reduced to 0.34:1
- Windows on western side of dwelling house changed from timber to aluminium framed
- BACK VENEER WALLS
- Window to southern side of garage changed from timber to aluminium framed
- Roof of addition changed to remove valleys and to be corrugated metal instead of tiles, similar to new roof addition of 185 Milton Street.
- Garage roof to be corrugated metal colour to match dwelling house metal roof



DASKO SOLAR DESIGNS

Plan No WD03 REV B dated 3 January 2024

Sheet 3

187 Milton Street Ashbury Scale 1:100